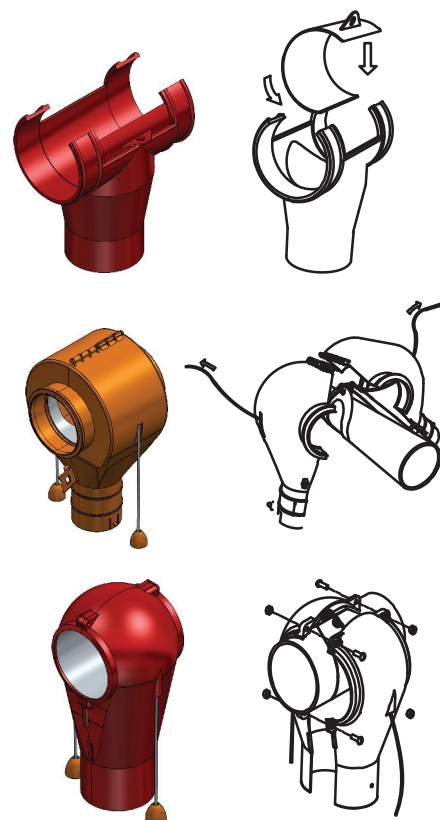




## OUTLET DROPS, PVC AND STEEL TUBES

## HERMETIC AND RESISTANCE

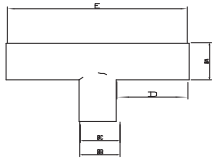
- Range of outlets designed for perfect exit of feed, whether flour or granulated.
- Easy to use. Different mounting options.
- Hermetic to moisture and dust.
- All of them have individual opening and closing.
- Made of polypropylene guaranteeing resistance to friction and external elements.
- With telescopic extension to adjust the capacity of the hopper.
- Ø 55, 60, Ø 75, 90 and 125 mm for transport tube and for Ø 63 o Ø 70 and 110 mm for drop tube.



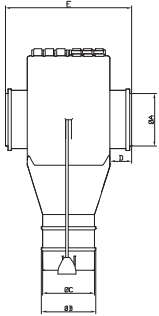

**GROWKET**  
 SYMAGA GROUP

# OUTLET DROPS, PVC AND STEEL TUBES

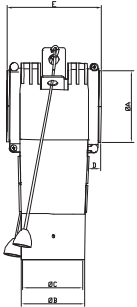
## Technical Data



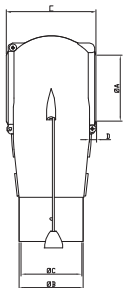
MODELS							DROP TUBE
CODE	TUBE mm	A	B	C	D	E	mm
G02002010002	55	54,5	40	38	80	200	40



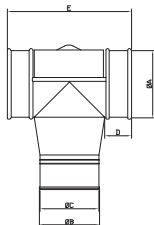
MODELS							DROP TUBE
CODE	TUBE mm	A	B	C	D	E	mm
G02002010003	55	54,5	57	52	24	138	63
G02002020001	60	58,4	57	52	23,75	138	63
G02002030001	75	75	57	52	23,75	138	63
G02002040001	90	90	57	52	24	138	63



MODELS							DROP TUBE
CODE	TUBE mm	A	B	C	D	E	mm
RDESC5503	55	56,5	70	66	14	103	70



MODELS							DROP TUBE
CODE	TUBE mm	A	B	C	D	E	mm
G02002030003	75	72	70,4	66,4	8	98	70
G02002040002	90	88,5	69	65	12	118	63



MODELS							TUBO DESCENSO
CODE	TUBE mm	A	B	C	D	E	mm
G02002030002	75	67	66	59,5	28	136	70
G02002050001	125	116,5	104	92	38	210	110



Opening and closing system from the ground.



Montage to the tube just by a click system, without any bolt, nut or clamp. Discharge with manual slide gate. Descarga con tajadera manual.

Growket, Symaga Group reserves the right to modify the price or the technical characteristics without any previous notification.